

FDA Cleared

enbio.

Unwrapped  
FAST / 273°F

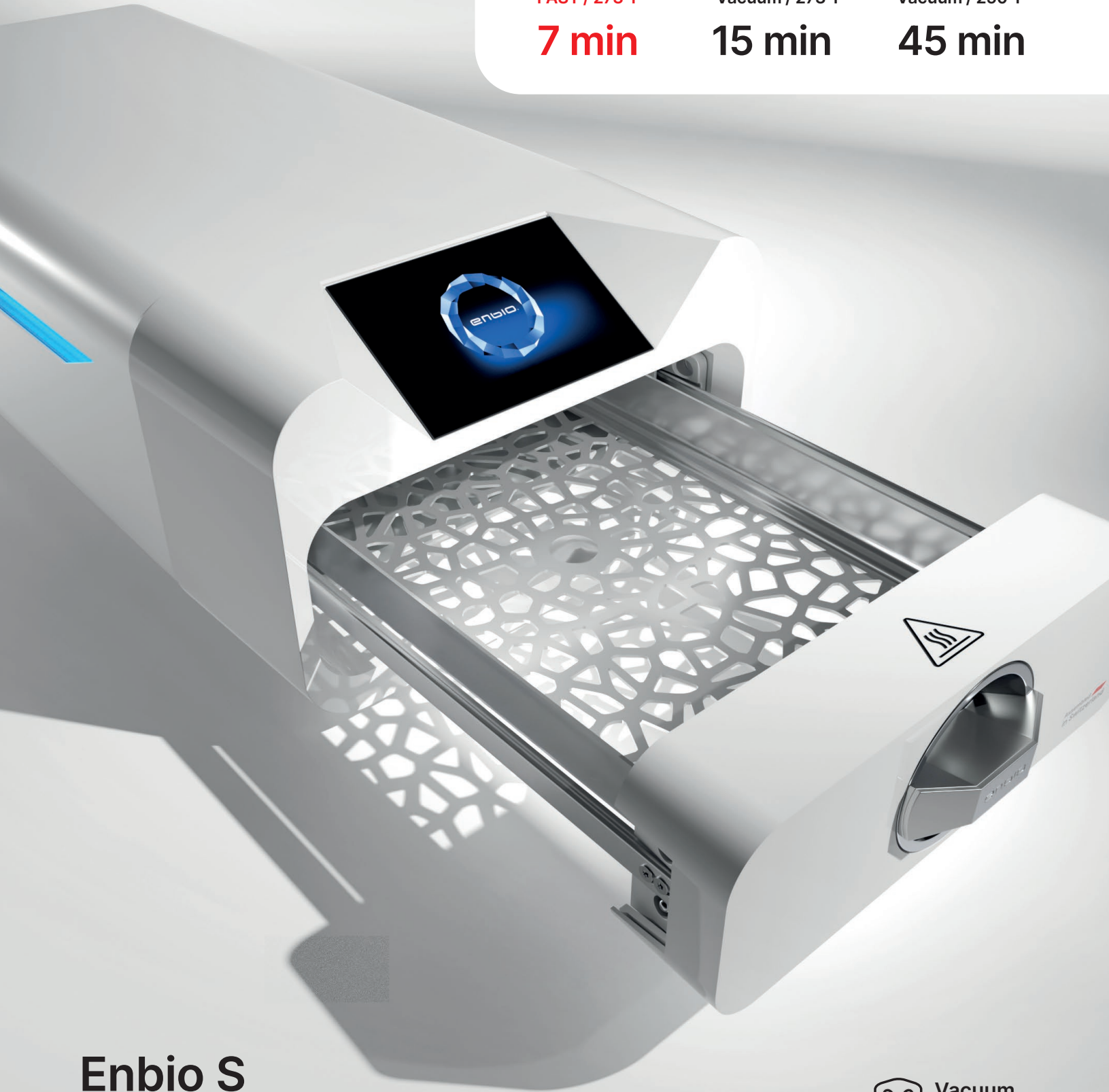
**7 min**

Wrapped  
Vacuum / 273°F

**15 min**

Wrapped  
Vacuum / 250°F

**45 min**



# Enbio S Autoclave Technical Data

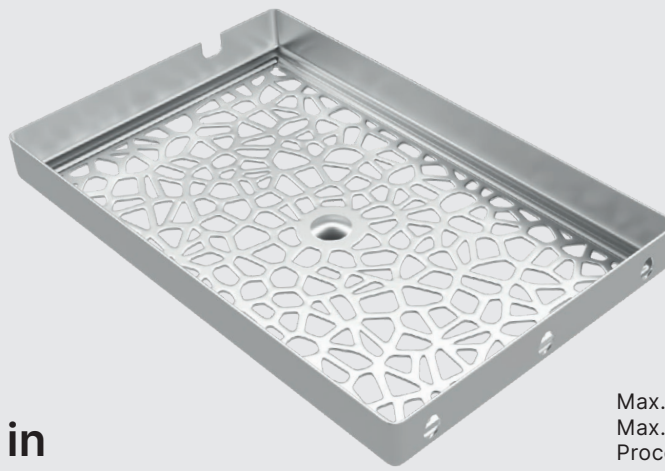


Vacuum  
Pouches+  
drying

## Capacity



x8



Load space  
**11×7×1.3 in**

Max. packages amount (circa) **8**  
Max. recommended batch weight **1.1 lb**  
Process chamber volume **2.7 l**



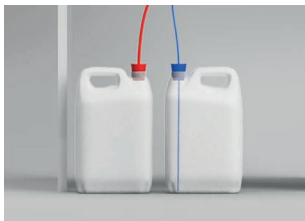
### Power supply

Enbio<sup>®</sup> works with any typical electrical outlet.



### Data archiving

All process data are automatically written to a USB disk.



### Water supply

Enbio uses distilled water from external tank.



### Process reports

Enbio Data Viewer (included) allows generating and printing detailed process reports from the data on USB.

## Dimensions



### Pressure & temperature

Working pressure **2.1 Bar/30.5 psi**  
Max. pressure **2.3 Bar/33.4 psi**  
Max. process temperature **137°C/278.6°F**

### Electrical

Power supply **110-120V/60Hz**  
Installed power **3.23 kW**  
Max. power consumption **15 A**

### Misc

Ingress protection **IP20**  
Data archiving **USB**  
Water conductivity\* **< 15 µS/cm**

\* - demineralized water only



**Enbio Group AG**  
Eichengasse 3, 4702 Oensingen  
Switzerland

**US Distribution Center: Enbio Corp.**  
3535 Gravel Springs Rd, Ext. 205  
Buford, GA 30519

**enbio.us**