

# Products & Services Catalog

MÄSTEL

*Last update: September 2022*

# Welcome

Mastel Precision has been serving ophthalmology exclusively for four decades. Time spent in the operating room allows us to better understand your needs and to develop superior products you require for improving patient care.

We are committed to providing innovative, quality, hand crafted surgical instruments that you can rely upon with the utmost confidence.

We are proud to say Made in America since – *1981*

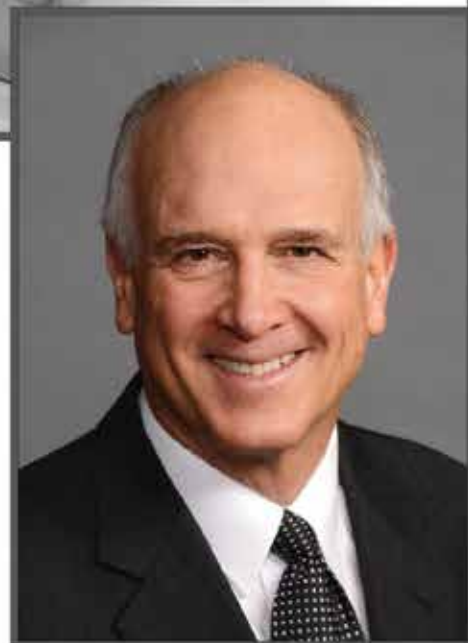


Trusted Hands...  
Trust Mastel Precision.



Thank you from all of us at Mastel for your many decades of continued support.

Douglas J. Mastel, Founder



# The Mastel Commitment

If you ever experience a problem with one of our instruments not related to use, we will repair or replace it at no charge.

Welcome & Commitment	2-3	Asigmatism Marking/Alignment	14-15
Opthalmic Diamond Scalpels	4-5	Pre-Operative Marking	16-17
President Diamond Scalpel Series	6-7	Corneal Markers	18-19
Elite II Diamond Scalpel Series	8-9	Repair & Upgrade Services	20
PHD II Diamond Scalpel Series	10-11	General Information	21
Fixation	12-13		

Trust

# Ophthalmic Diamond Scalpels

*Industry-Leading Design. Hand-Crafted Precision.*



**Since Nineteen Eighty One,**

*Mastel has set the standard for minimally invasive diamond scalpels.*



*Tens of thousands sold with many original scalpels still serving today.*

## President Series Diamond Scalpel

*Our absolutely robust, all titanium freehand diamond platform.*

The President



The President handle is manufactured in America from medical grade titanium alloy. Because there are no springs to fail in our mechanism, the diamond stylus is fixed to the body at the distal end, so there is no free play between your hands and the blade.



### **Gimbel SuperStealth Trapezoids**

*Designed with Howard V. Gimbel, MD, Calgary, Alberta, Canada. (2.0/2.5 mm size shown)*

### **Gimbel UltraStealth**

*Designed with Howard V. Gimbel, MD, Calgary, Alberta, Canada. (2.4 mm size shown)*

### **Meister TriFacet**

*Designed with Richard Meister, MD, Sacramento, CA, USA.*

### **SafetyPort 55°**

*This diamond is our finest parallel-sided 1.0 mm paracentesis diamond.*

### **Tanto**

*Designed with Jeshal Patel, MD, and Robert Stegmann, MD, Johannesburg, South Africa.*

### **Ahmed SuperPentAhm**

*Designed with Iqbal 'Ike' K. Ahmed, MD, Toronto, Ontario, Canada.*

### **Stealth Fine Triamond 0.3**

*Designed with I. Howard Fine, MD, Eugene, Oregon, USA.*

### **Fine ParaTrap**

*Designed with I. Howard Fine, MD, Eugene, Oregon, USA. (1.1/1.4 mm size shown)*

### **John Groover**

*Designed with Maurice John, MD, Jeffersonville, Indiana, USA.*

### **Nichamin Classic 600**

*Designed by Louis D. 'Skip' Nichamin, MD, Brookville, Pennsylvania, USA.*

### **Stegmann MicroCrescent**

*Designed with Robert Stegmann, MD, Johannesburg, South Africa.*

### **Ahmed SuperCrescent**

*Designed with Iqbal 'Ike' K. Ahmed, MD, Toronto, Ontario, Canada.*

SKU # 10.305.4033

SKU # 10.305.4043

SKU # 10.301.2013

SKU # 10.302.2015

SKU # 10.301.2005

SKU # 10.301.2011

SKU # 10.302.2016

SKU # 10.303.2023

SKU # 10.310.3086

SKU # 10.309.3016

SKU # 10.312.1089

SKU # 10.311.1087

## Elite II Micrometer Series Diamond Scalpel

*The ultimate in controlled-depth precision for corneal relaxing incisions.*

The Elite II



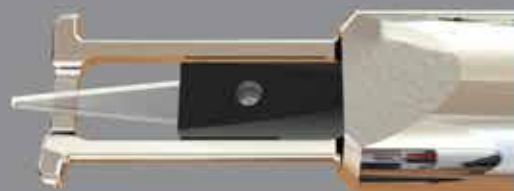


## Mastel Arcuate Corneal Compass "MACC"

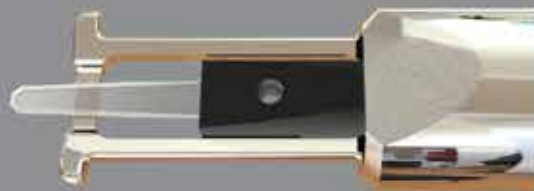
*Reproducible, consistent Arcuate Astigmatic Keratotomies at a 10mm diameter optical zone.*



*The Elite II can be equipped with an alignment pin to accommodate the MACC System.*



Fine Triamond with Inset Profile Footplate  
SKU # 12.321.1016



Stegmann MicroCrescent with Inset Profile Footplate  
SKU # 12.321.1089



Fine Triamond with Corneal View (CV) Footplate  
SKU # 12.322.1016



Davis Doubler - Micro Incisional Enhancement M.I.E.  
SKU # 12.324.1092



Mastel Arcuate Corneal Compass "MACC"  
SKU # 25.277.0001

## PHD II Step Series Diamond Scalpel

*The 'Swiss Army Diamond' of ophthalmic scalpels.*

The PHD II



*Simple, quick actuation by calibrated steps. Includes full extension for free-hand surgery.*

## Ahmed Angulated PHD II

*Equally at home in the operating room or at the slit-lamp.*



*Fine Triamond with Inset Profile Footplate*  
Refractive Cataract Thimble Depth Settings (mm)  
0.00, 0.30, 0.55, EXT, RET, 0.60, 0.65, 0.70, 0.75  
SKU # 11.315.1016



*Stegmann MicroCrescent with Inset Profile Footplate*  
Cataract/Glaucoma Thimble Depth Settings (mm)  
0.00, 0.30, 0.50, 0.55, EXT, RET, 0.60, 0.65, 0.70  
SKU # 11.315.3089



*Ahmed Angulated Diamond and Footplate System*  
Ahmed Angulated Thimble Depth Settings (mm)  
0.00, 0.50, 0.55, EXT, RET, 0.60, 0.65, 0.70, 0.75  
SKU # 11.319.6091



## Thornton Fixation Rings & Singer Triport

### **Fine-Thornton Ring (FTR)**

*The modification of the Thornton ring by I. Howard Fine, MD, involved removing a segment from the original fixation ring to allow access for phaco incisions.*



*The original Thornton Fixation Rings were designed by...*

*Spencer P. Thornton, MD,  
Nashville, TN, USA.*



## Singer Triport

*Performs like an extension of your fingers. It provides delicate fixation on the conjunctiva or superb fixation with the finger tip in the paracentesis.*

*Designed with Jack A. Singer, MD,  
Randolph, Vermont, USA.*



\*Bores Handle



Handles shown actual size

\*Thornton Handle

FTR 14 Swivel-Open  
SKU # 25.268.1401



Fixation 14mm Swivel-Closed  
SKU # 25.266.1401



Fixation 14mm Fixed-Closed  
SKU # 25.255.1401



FTR 14.00mm Fixed-Open  
SKU # 25.257.1401



Singer Triport  
SKU # 26.115.0101



\*Handle option is designated by  
the last number in part number.\*  
(1) Bores (2) Thornton

# Astigmatism Marking/Alignment

## Osher/Nichamin Ring

Our latest laser-etched numerical ring features low profile access with enhanced visualization of the surgical limbus.

Designed with Robert Osher, MD,  
and Louis D. 'Skip' Nichamin, MD



Osher Nichamin Ring

Cionni Ring

## Cionni Ring

This low profile design incorporates dual scales for Toric Alignment as well as an arcuate guide and length control for Limbal Relaxing Incisions (LRI).

Designed with Robert Cionni, MD,  
Salt Lake City, Utah, USA.

Gimbel Mendez Ring

Olson Ring





## Olson Ring ~ SKU# 25.244.0001

The first arcuate astigmatic keratotomy guide ring for peripheral corneal relaxing incisions (LRI at 10mm optical zone).

*Designed with Randall Olson, MD,  
Salt Lake City, Utah, USA.*

## Gimbel Mendez Ring

Introduced in 2007, this has become the gold standard for Toric lens marking during the procedure. Excimer laser etching upon an advanced metallurgical coating provides 5° discrimination, meaning interpolation to within a degree or two is possible in skilled hands.

*Designed with Howard V. Gimbel, MD,  
Calgary, Alberta, Canada.*



\*Bores Handle



\*Thornton Handle

Handles shown actual size

Osher Nichamin - Jarvi  
SKU # 25.222.1001



Gimbel Mendez - Jarvi  
SKU # 25.211.1001



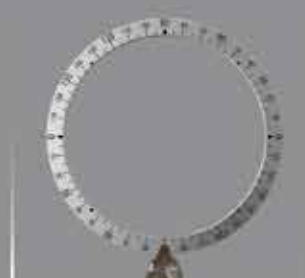
Osher Nichamin - Koch 135  
SKU # 25.222.1351



Gimbel Mendez - Koch 135  
SKU # 25.211.1351



Osher Nichamin - 90  
SKU # 25.222.0901



Gimbel Mendez - 90  
SKU # 25.211.0901



Osher Nichamin - 0/180  
SKU # 25.222.1801



Gimbel Mendez - 0/180  
SKU # 25.211.1801



Cionni-90  
SKU # 25.233.0901



Cionni - 0/180  
SKU # 25.233.1801



\*Handle option is designated by  
the last number in part number.\*  
(1) Bores (2) Thornton

# Pre-Operative Marking

## Davis Plumb Bob Series Davis MD OneStep

*This is the ultimate premarking solution. By rotating the head to the steep 'primary' corneal meridian, these references will be the final positioning of the Toric lens (or AK) without additional intraoperative marking.*

### Pre-Operative

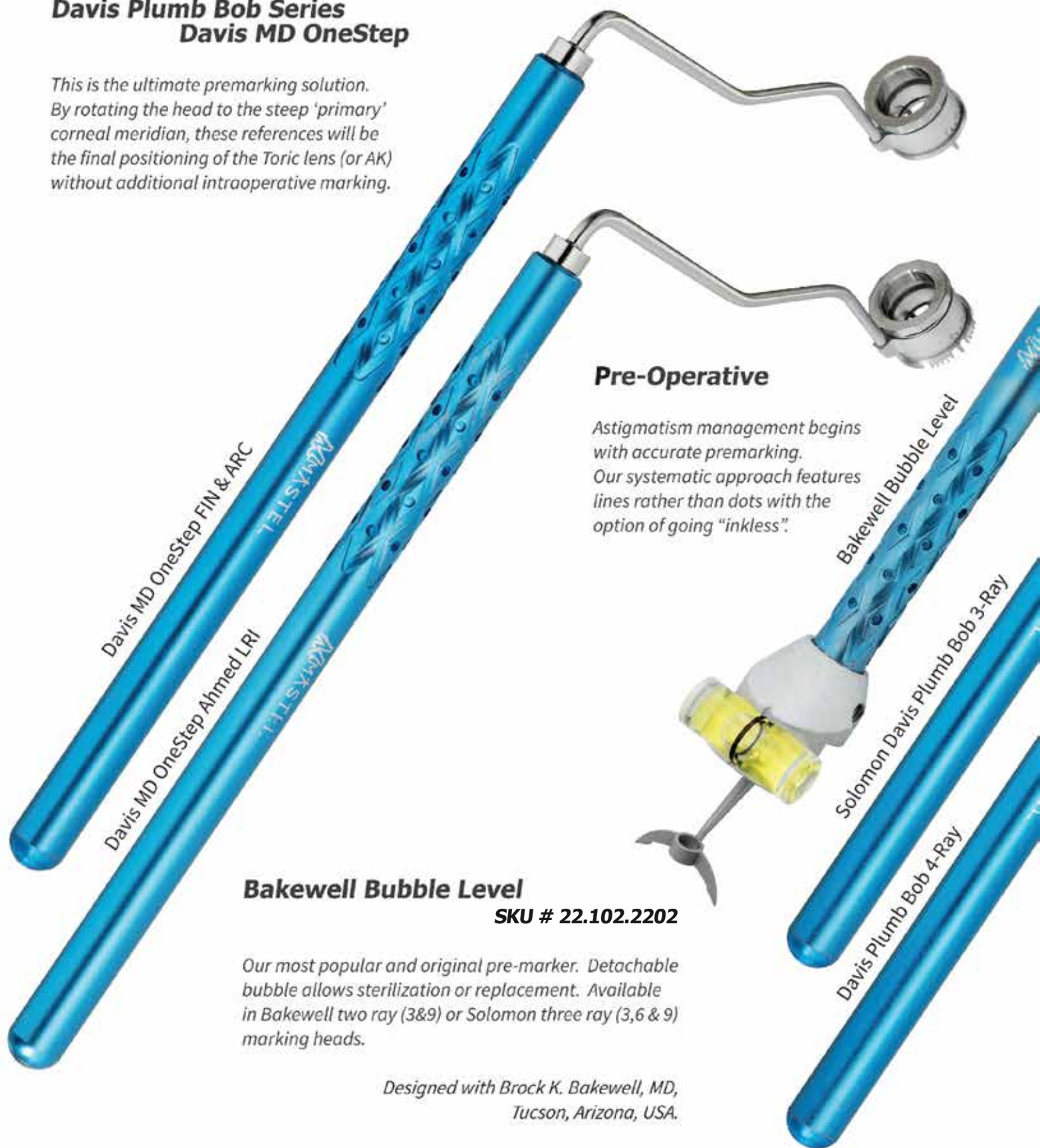
*Astigmatism management begins with accurate premarking. Our systematic approach features lines rather than dots with the option of going "inkless".*

### Bakewell Bubble Level

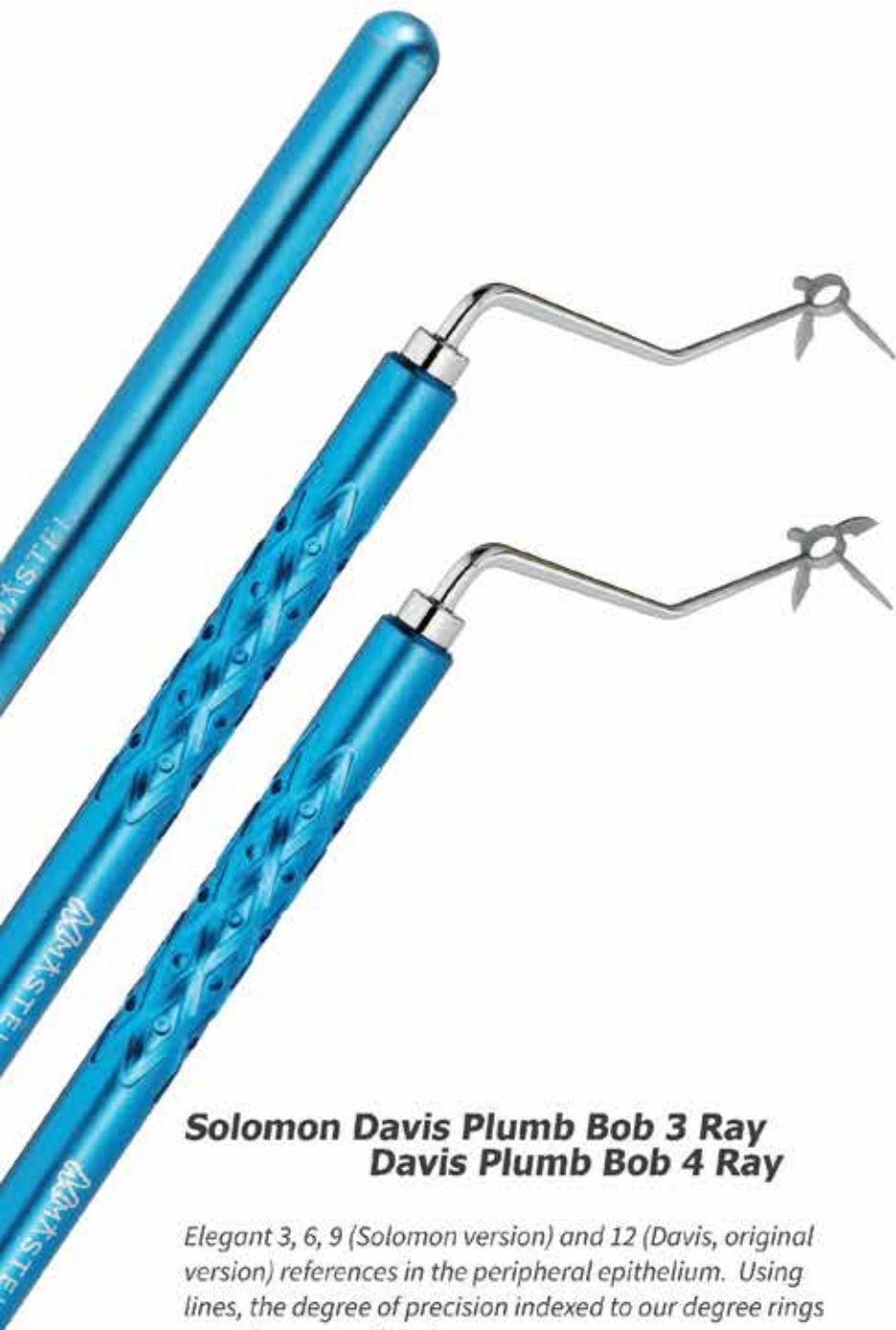
**SKU # 22.102.2202**

*Our most popular and original pre-marker. Detachable bubble allows sterilization or replacement. Available in Bakewell two ray (3&9) or Solomon three ray (3,6 & 9) marking heads.*

*Designed with Brock K. Bakewell, MD,  
Tucson, Arizona, USA.*







## Solomon Davis Plumb Bob 3 Ray Davis Plumb Bob 4 Ray

Elegant 3, 6, 9 (Solomon version) and 12 (Davis, original version) references in the peripheral epithelium. Using lines, the degree of precision indexed to our degree rings provides unparalleled accuracy.

Designed by Andrew P. Davis, MD,  
Bellevue, Washington, USA.



Handle shown actual size

\*Available in Thornton Handle Only



STEEP/FLAT - SKU # 21.114.6025



ARC - SKU # 21.114.6020



LRI - SKU # 21.114.6030



3 Ray - SKU # 21.113.3002



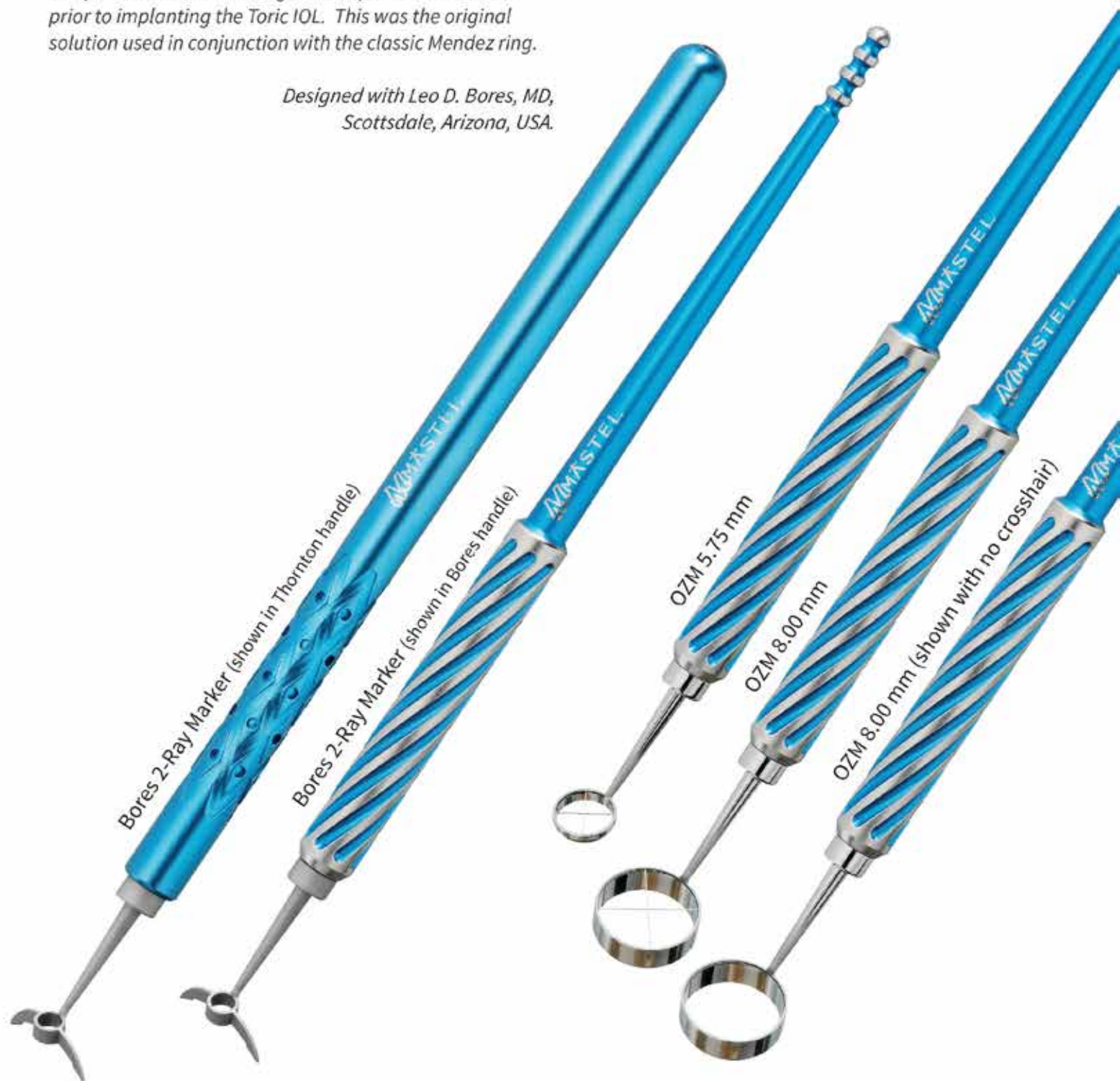
4 Ray- SKU # 21.113.4002

# Corneal Markers

## Bores Two-Ray and Three-Ray Corneal Meridian Marker

*The perfect tool for marking the steep corneal meridian prior to implanting the Toric IOL. This was the original solution used in conjunction with the classic Mendez ring.*

*Designed with Leo D. Bores, MD,  
Scottsdale, Arizona, USA.*





## Optical Zone Markers

*When capsulorhexis size and shape matter, this is the first tool a surgeon should utilize. The faint "inkless" outline helps form a concentric, properly sized capsulorhexis.*

*We feature a complete line of Optical Zone markers for PRK alcohol wells and sizes to fit all corneal procedures today. All OZM markers are available with or without crosshairs.*



*\*Bore Handle*



*Handles shown actual size*

*\*Thornton Handle*



SKU # 22.102.2001



SKU # 20.111.0571



SKU # 20.111.0801



SKU # 20.110.0801

*\*Handle option is designated by the last number in part number.\*  
(1) Bore (2) Thornton*



# Repair & Upgrade Services

## Repair Services

We welcome instruments of any brand.  
All instruments need an inspection/evaluation before estimates or quotes can be provided.

## Diamond Scalpel Repair

Diamond repair is our specialty service.  
Our craftsmen have decades of experience repairing and evaluating scalpels from virtually every manufacturer. Let our knowledgeable staff inspect and clean, remount, rehone, or replace your diamond tips to make them like new again!

We recommend sending in your diamond at least once a year to check diamond holding epoxy, diamond edge and calibration.

## All Other Repair Services

Experienced craftsman perform routine and complex enhancements.

### All Instruments (non-diamonds)

Cleaning | Inspection

### Wire Instruments

Cleaning | Inspection | Polishing

### Forceps & Microforceps

Realigning | Texturizing

### Optical Zone Markers

Straightening | Recondition | Crosshair Replacement

### Phaco Tips

Sharpening | Polishing  
\*Alcon and single use tips excluded\*

### Bakewell Bubble Level

Straighten | Recondition | Bubble Bracket Upgrade

### I/A Tips

Polishing (includes port) | Polishing & Texturing

### Davis MD OneStep

Crosshair replacement | Straighten | Recondition

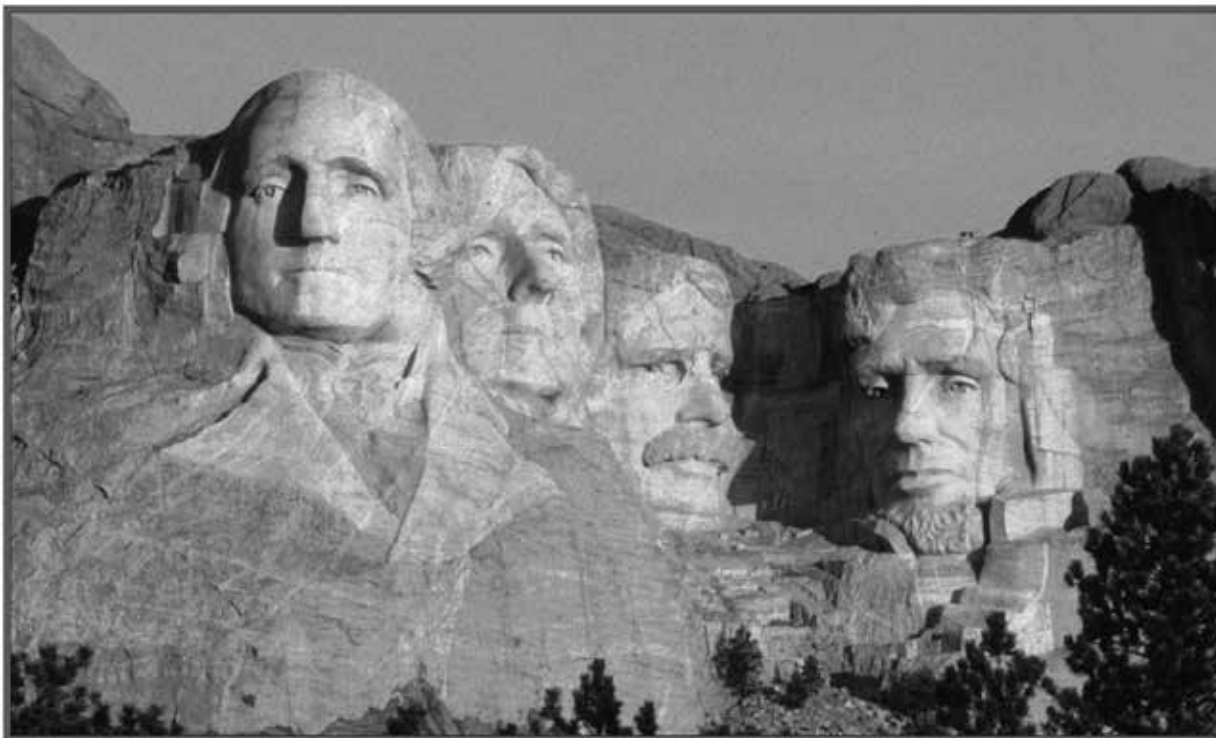
### Rings

Straighten & True Ring | Recondition & New Epoxy

### Davis Plumb Bob Radials

Straighten | Recondition





Mount Rushmore, South Dakota

## **Contact Us**

Phone: +1 800.657.8057 | +1 605.341.4595

Fax: +1 605.343.3631

Email: [sales@mastel.com](mailto:sales@mastel.com)

Website: [www.mastel.com](http://www.mastel.com)

## **Distributed in Canada by:**



800.663.4525 | 604.261.9596

[www.ksvision.ca](http://www.ksvision.ca) | [info@keirsurgical.com](mailto:info@keirsurgical.com)

## Notes

[illegible]

[illegible]



Mastel Precision  
2843 Samco Rd. Suite A  
Rapid City, SD 57702  
800-657-8057  
605-341-4595  
Mastel.com